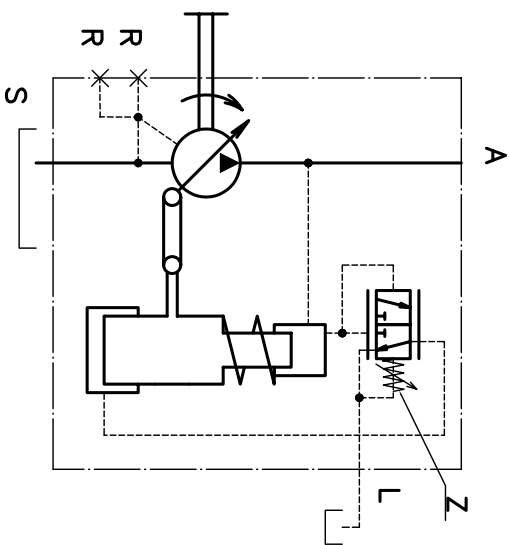


Technical characteristics

Hydraulic scheme



| Parameter | Value |
|--|-------|
| Working displacement, V, cc | 107 |
| nominal Vnom | 0 |
| Rotation speed, (rev/min) | |
| min | 400 |
| nominal | 1200 |
| max at min.input pressure | 2000 |
| Input pressure, MPa | |
| min Pnom | 0,08 |
| max Pmax | 0,2 |
| Output pressure, MPa (kgf/cm ²) | |
| nominal Pnom | 20 |
| max Pmax | 40 |
| Min. pressure of control valve stable operation, MPa | 3 |
| Nominal (consumed) power, N, kW | 44 |
| Flow, Q, (l/min) | 122 |
| Flow coefficient | 0,95 |
| Overall efficiency coefficient | 0,90 |
| Weight (without working fluid), kg | 40 |

Connections:

- A - pressure line SAE 1" 420 bar (6000 psi)
- S - suction line SAE 2 1/2" 170 bar (2500 psi)
- R - air port (plugged) M18x1,5 as per GOST 25065-90
- Z - adjustment screws Pyn (plugged during transportation)
- U - port for pumping of bearing unit (plugged)
- K 1/8 as per GOST 6111-52 (port diameter 4mm)
- L - drain line of controller (connect to hydraulic tank) - M12x1,5 as per GOST25065-90